

## KSM Post-Mineral Deformation

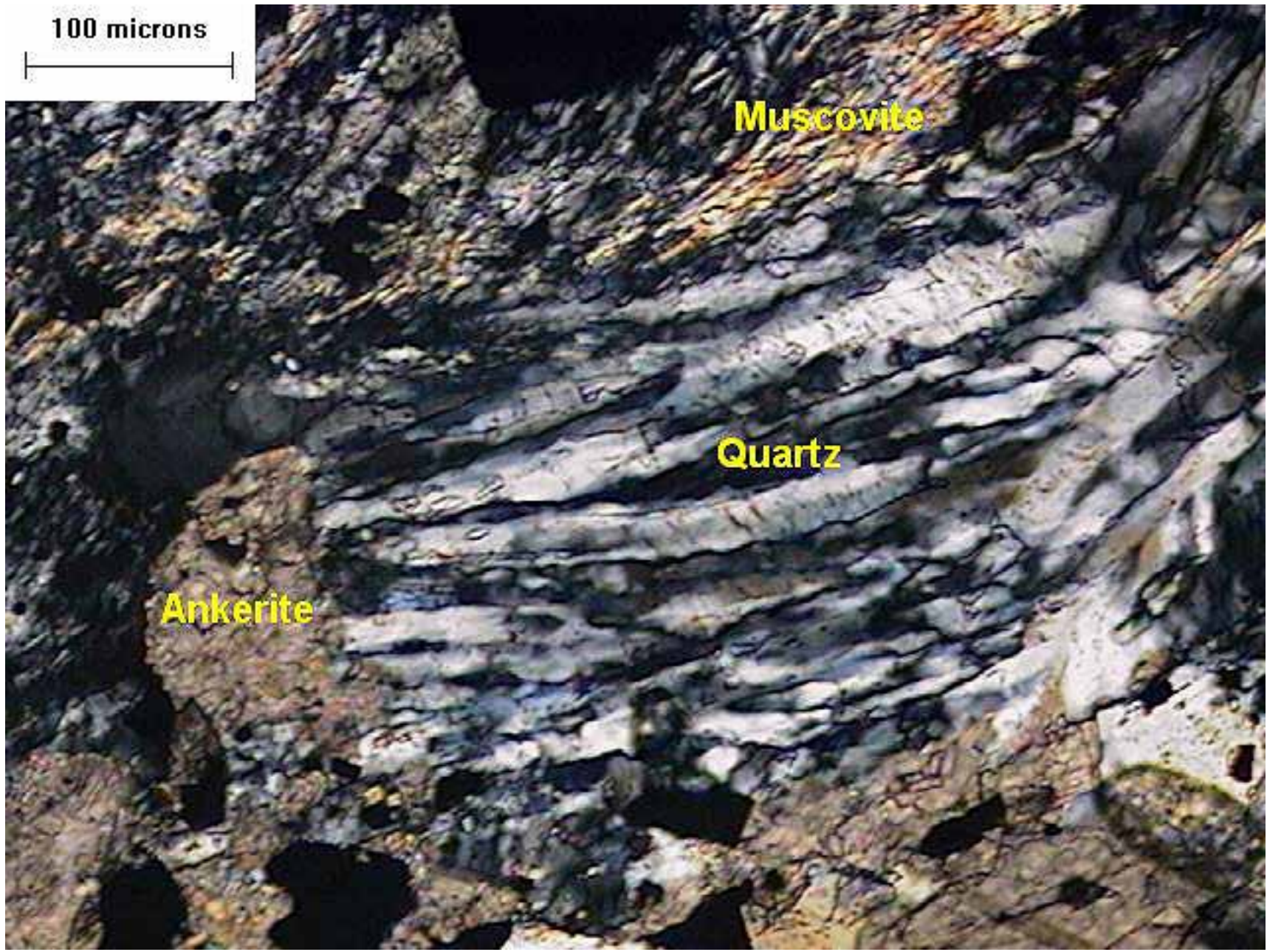


Qtz-Py-Cpy stockwork in Mitchell intrusions: folds occur in all orientations due to post-mineral N-S directed compression followed by an E-W directed compression.

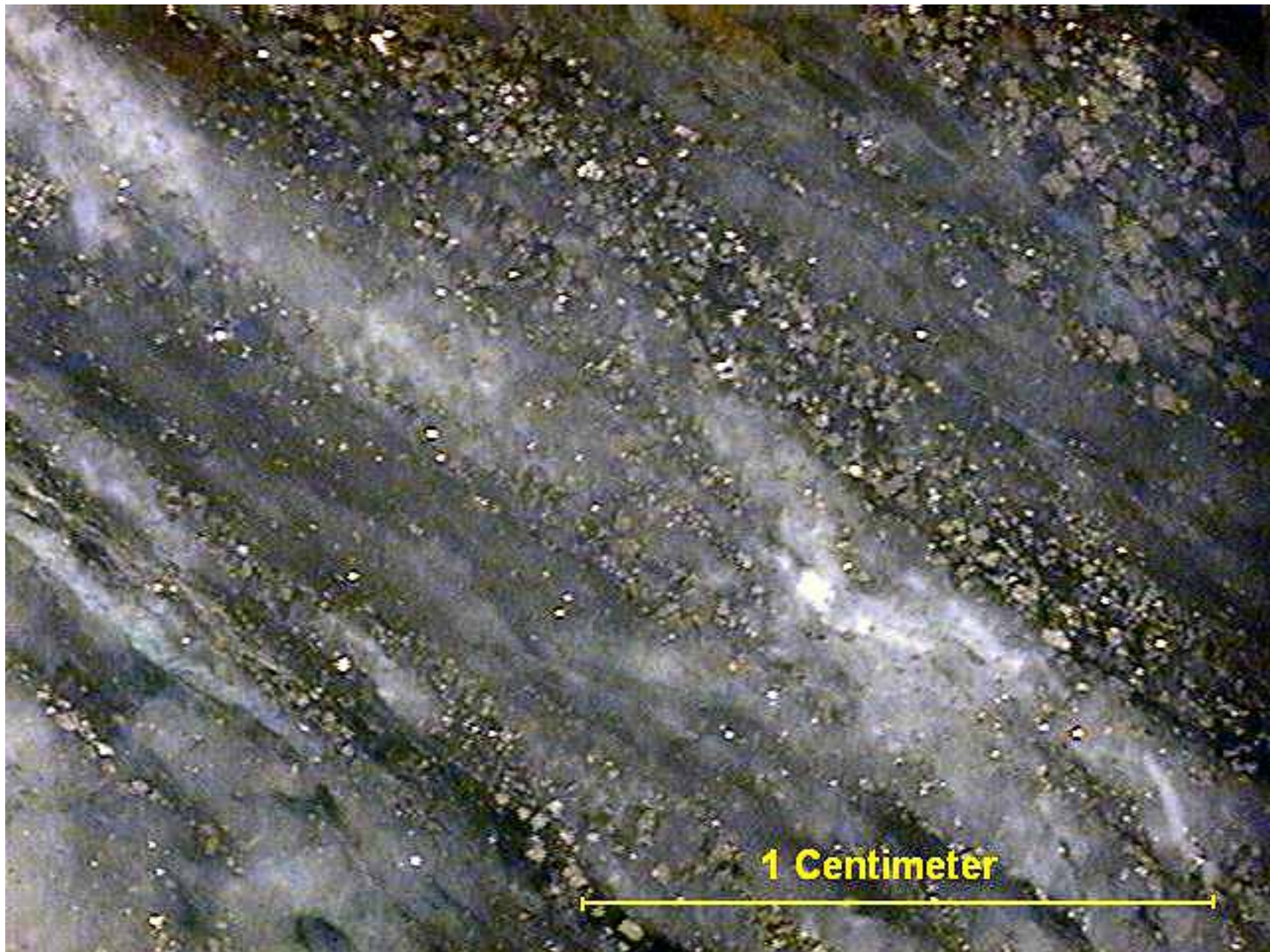
## KSM Post-Mineral Deformation



Qtz-Py-Cpy stockwork in Mitchell intrusions: folds occur in all orientations due to post-mineral N-S directed compression followed by an E-W directed compression.



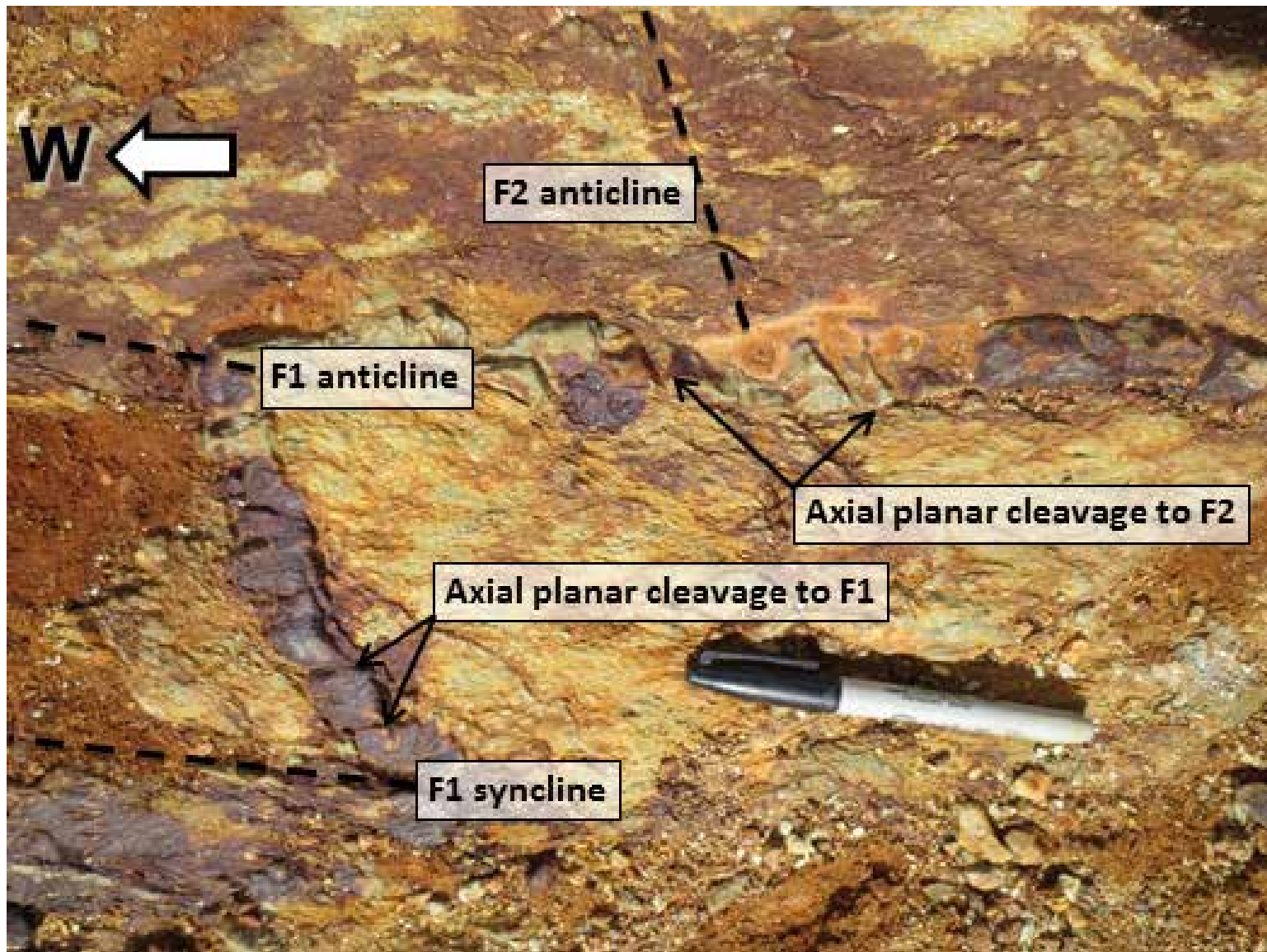
Late mineral precipitates in pressure shadows



Shear fabric in veins compressed into parallel arrays, crushed sulfides



Intricately folded veins at cm scales



Qtz-Cpy-Py vein records folds related to D1 and D2: A closed anticline, syncline pair of folds related to D1 plunge WNW with axial planar cleavage also striking WNW. A gentle anticline is formed during D2 plunging NNW with axial planar cleavage striking N



Tight to isoclinal folds in milky quartz-pyrite vein (Kerr deposit, phyllic altn), subtle F1 (black arrows) reflect D1 compression directed N-S, strong F2 (blue arrows) reflect D2 compression orientation E-W. Foliation developed during D1 is tightly folded by D2 compression.